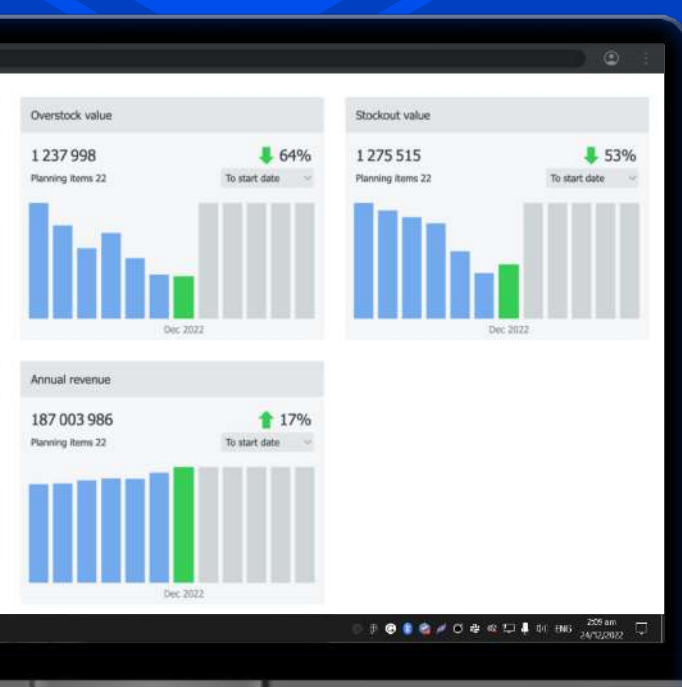


Streamline is the world's leading Supply Chain Planning Platform with Dynamic Simulation

The innovative AI-based solution for supply chain planning.

Leverage real-time data from across the enterprise for decision making at the speed of business. Reduce operating cash and increase business profitability by doubling locked profits!



Leader on G2

★★★★★ 4.5

300+

manufacturers, distributors, and retailers

150+

representatives in 21 countries

Streamline customers



Problems Streamline solve:

| | | |
|-----------------------|------------------------|--------------------------------|
| Excessive inventory | Shortages in inventory | Excessive manual work in Excel |
| Low forecast accuracy | Purchasing constraints | Lack of visibility and control |

Streamline AI Solution

How it works

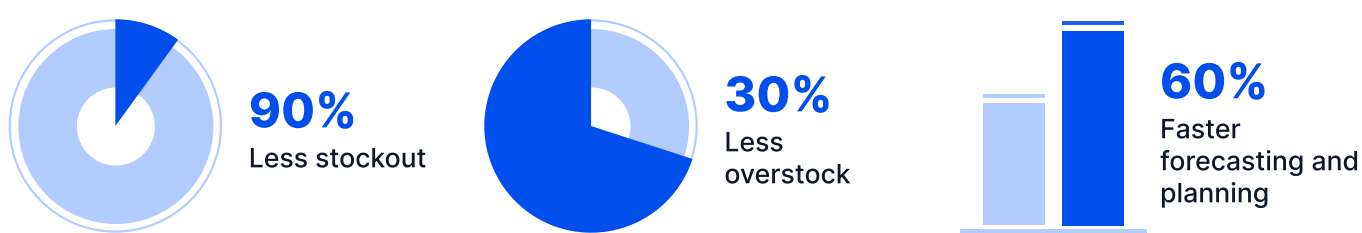
The solution integrates with the company's ERP system and helps with demand forecasting, supply planning and material requirements planning based on demand and inventory information.

| | | |
|-----------------|-------------------------|--------------------------------|
| Demand Planning | Demand Forecasting | Sales Forecasting |
| Supply Planning | Inventory Optimization | Material Requirements Planning |
| S&OP | Inter-site optimization | Dynamic Simulation |

Why Streamline

| | |
|--|---|
| No-code ERP integration 18 direct connectors with different ERP systems. No-code technology for implementation | Rapid data processing About 2,000,000 planning items are processed in seconds |
| The most implementable software 100% of customers successfully implement Streamline into their processes | Forecast accuracy Improved forecasting accuracy with AI |
| Easiest setup The highest ease of setup according to G2 rating | Agile collaboration Improved collaboration among users and departments |
| Dynamic simulation (Digital Twin) Dynamic modeling to "play forward in time" and test how the supply chain will look in the future | Value-based investment A value that exceeds investment several times |




Benefits of using Streamline



What our customers say about Streamline

| | |
|--|---|
|  <p>"Streamline has been very helpful in reducing the time and effort required to calculate our purchasing requirements and place our purchase orders. Previously we used complex spreadsheets, which were quite cumbersome, but Streamline has made the process at least 100% faster.</p> <p>Using it for more than one year has also resulted in a 5-10% reduction in stockholding with minimal impact on the fill rate. Support from the team is excellent and timely, and there is continual work on the product with features and updates."</p> <p>Keith Yong CEO of Transgold</p> |  <p>"Throughout the software implementation phase, we were impressed with the responsiveness of GMDH Streamline team in introducing new features and enhancing the solution to meet Panda's requirements for a more efficient supply chain processes."</p> <p>Saleh Jamal Director of Supply Chain Excellence & Replenishment at Panda Retail</p> |
|--|---|

Case Studies:

| | | |
|--|---|---|
|  <p>Panda</p> <p>Inventory Optimization & Safety Stock Reduction by \$210,000/month with AI</p> <p>to the website</p> |  <p>Genomina Lab.</p> <p>40-50% of Inventory Reduction in Pharmaceutical Industry</p> <p>to the website</p> |  <p>TRANS GOLD</p> <p>Inventory Optimization for a 40-year Autoparts Distributor</p> <p>to the website</p> |
|--|---|---|

Leading solution

based on customers' reviews

| | | |
|---|---|---|
|  |  |  |
|---|---|---|

[REQUEST A LIVE DEMO](#)